

How To... *Reversible Tote Bag*

Materials

1 1/3 yards of Fabric 1

1 1/3 yards of Fabric 2



Fabric 1 RIGHT Side



Fabric 1 WRONG Side

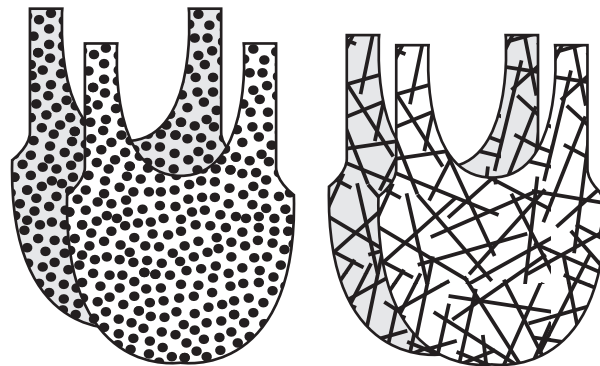
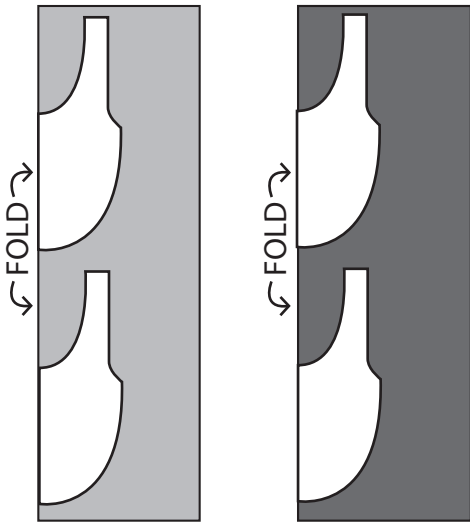


Fabric 2 RIGHT Side



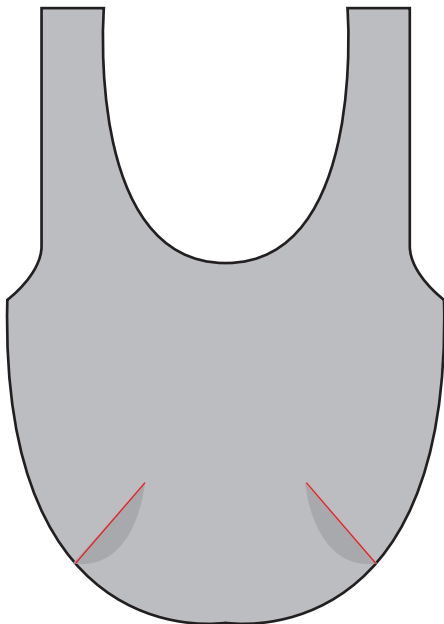
Fabric 2 WRONG Side

1. Fold each of the fabrics in half lengthwise with the wrong side out. Place the pattern on the fold and cut 2 in each fabric. Be sure to mark the dart points. Seam allowance is included on this pattern.

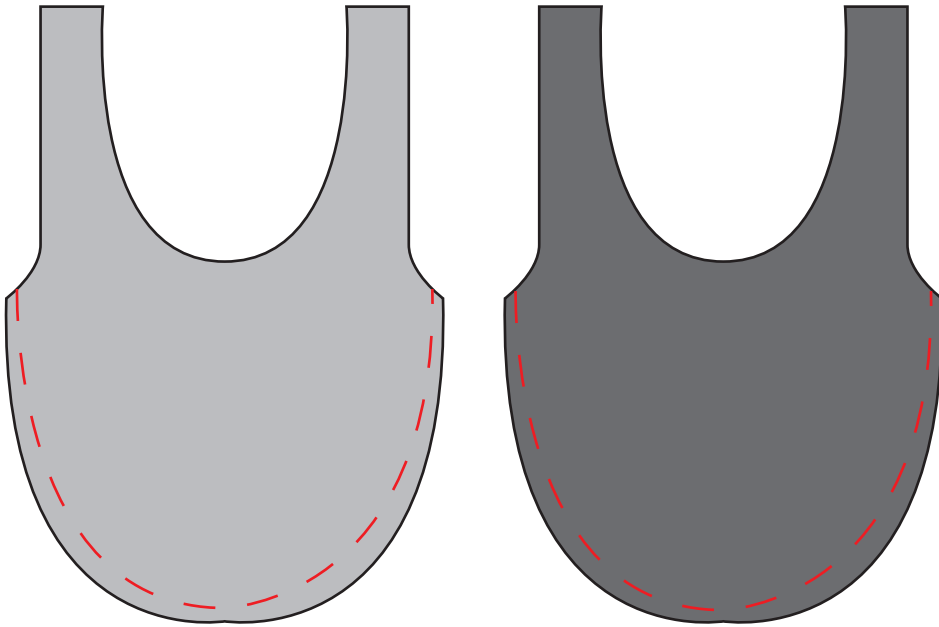


You will have two sets in each fabric.

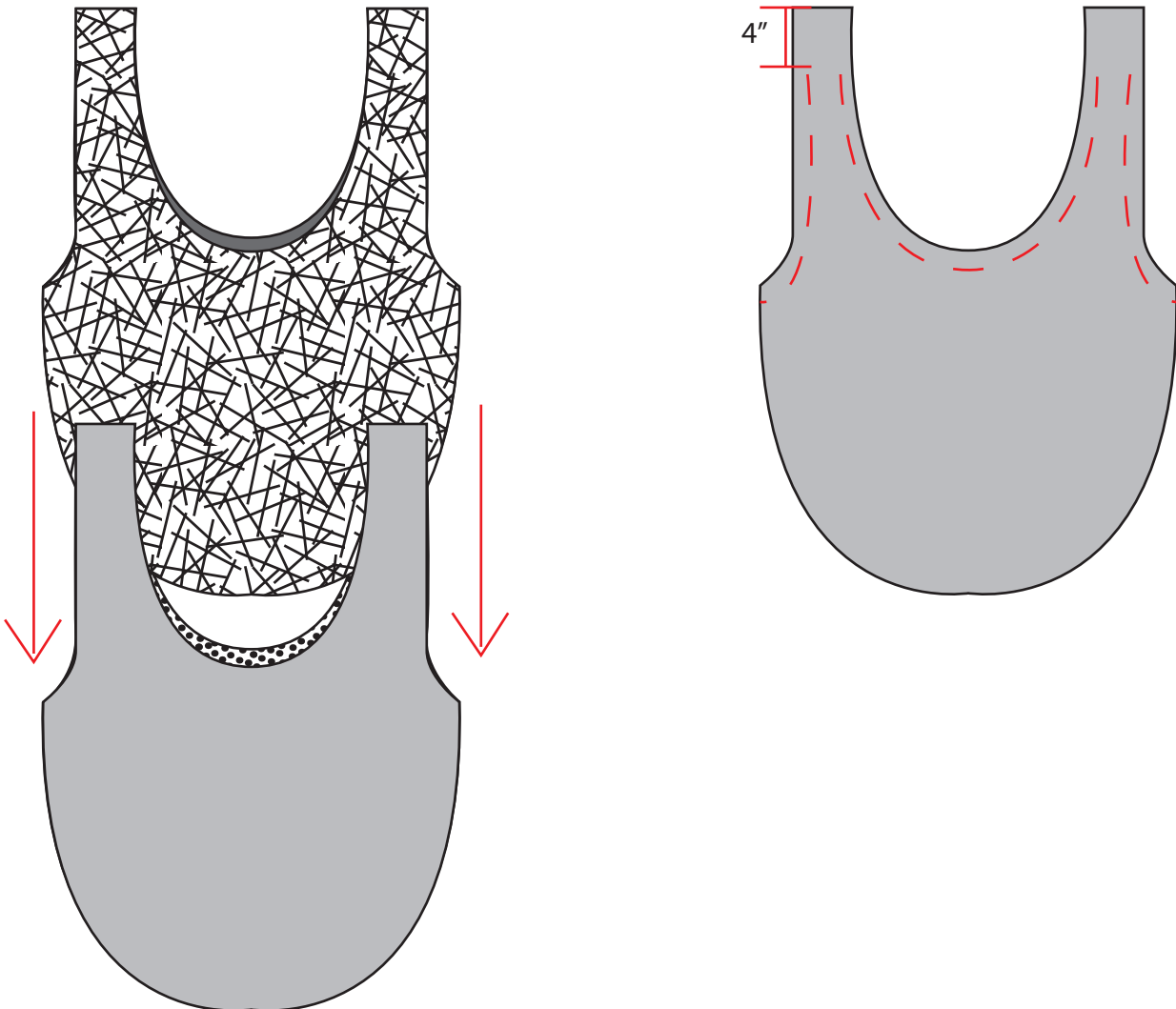
2. Sew the darts on all of the pieces and iron them to the center.



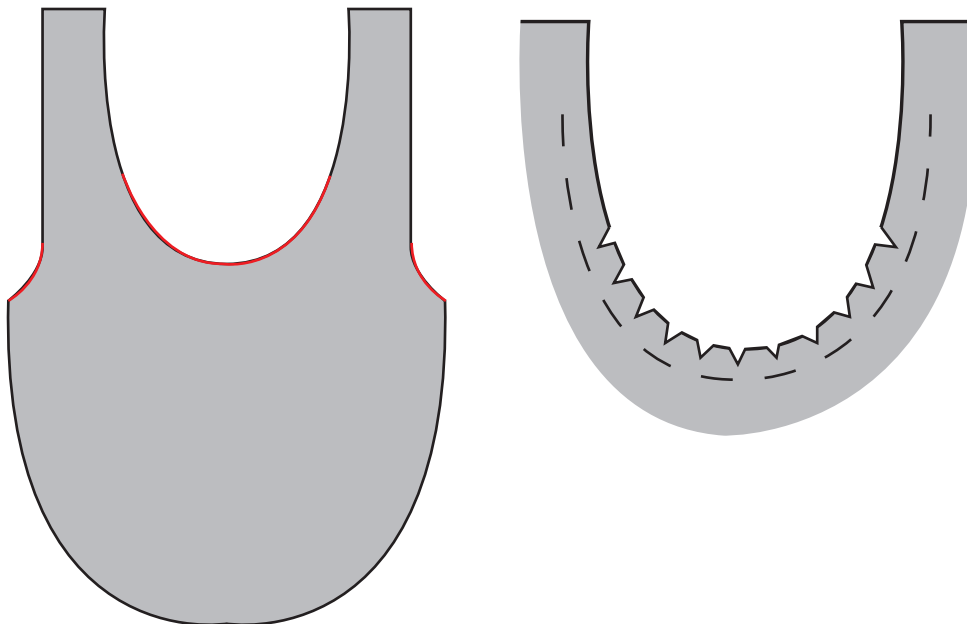
3. Put right sides of each set together and sew the bottom edges, leaving the straps open. Use 1/2" seam allowance.



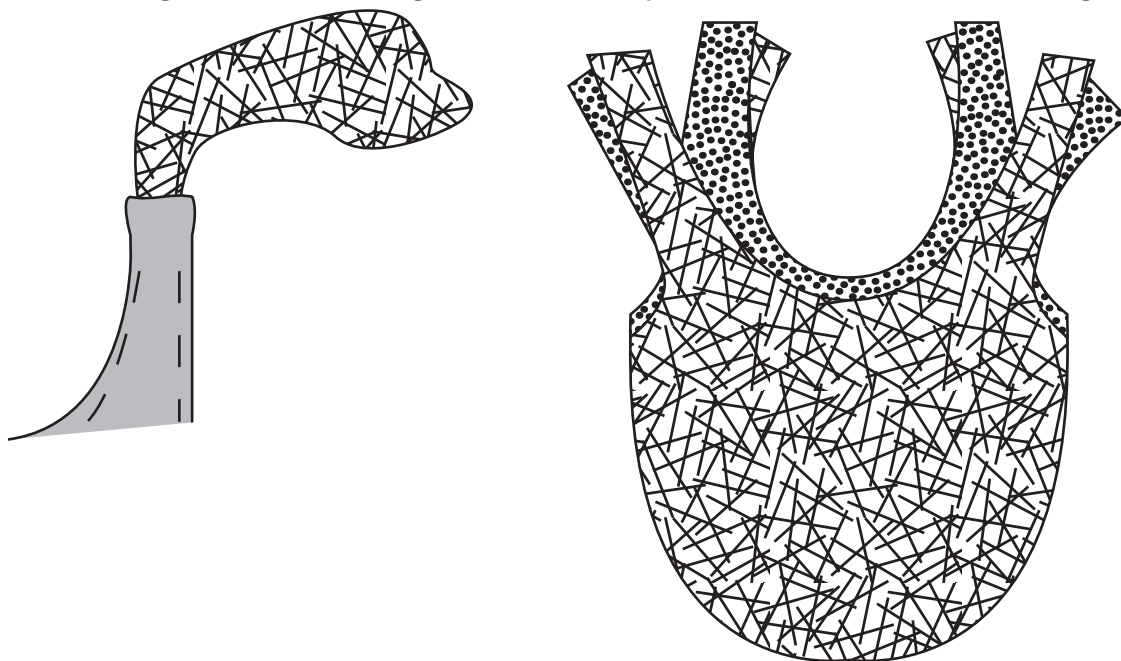
4. Put Fabric 2 Set inside Fabric 1 Set, right sides together. Sew around the straps leaving 4" open at the top of each strap, as indicated below.



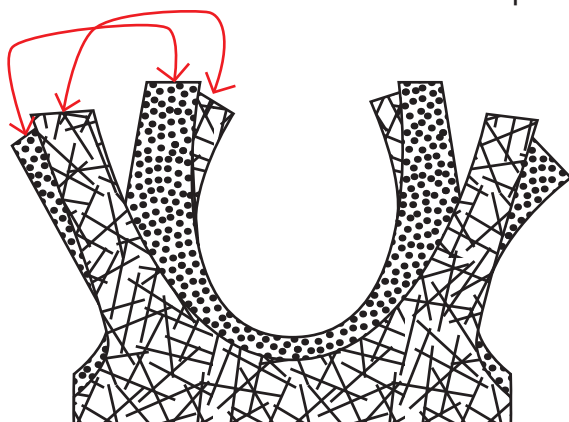
5. Clip rounded edges using care not to cut the sew line.



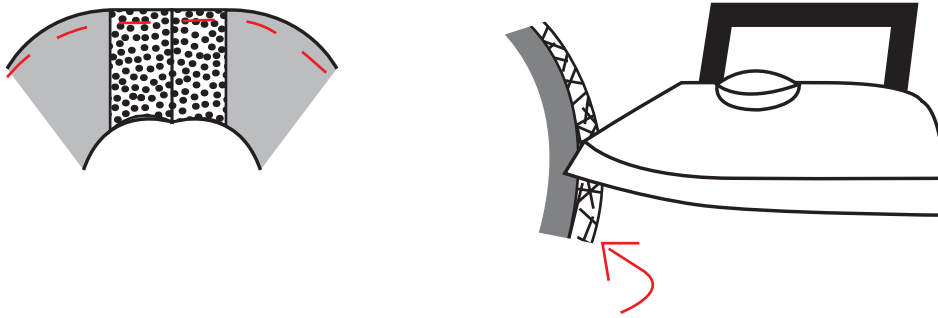
6. Turn the right sides out through one of the straps. Pull out each of the remaining straps.



7. Make sure the side seams are laying to the sides, not the center. Sew straps together, matching fabrics as indicated. You will have two sets of straps on each side



8. Iron strap seams open and sew between your stitches on the inside loop. Repeat on the other side. Iron all of the other edges in preparation for top-stitching.



9. Match the top seams together and pin all the open edges. Top-stitch with 1/4" seam allowance all around the edges of the bag. Press all edges when finished.

